

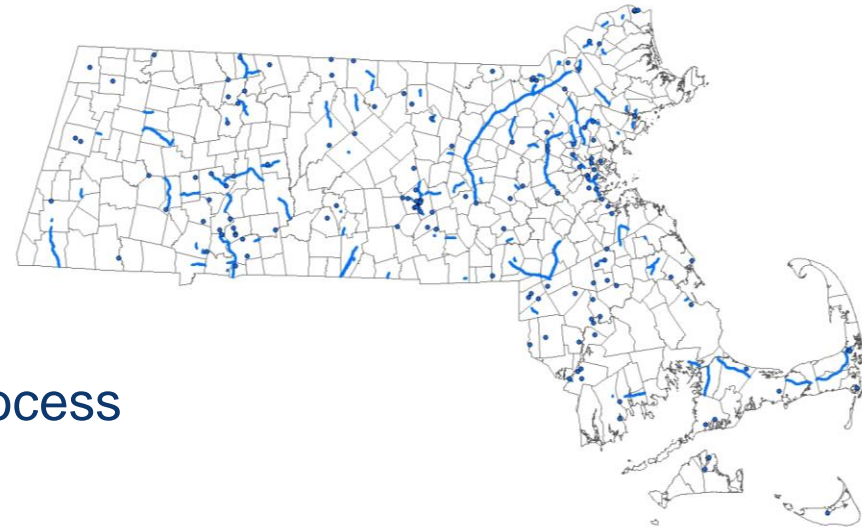
Eco-Logical & the MassDOT Project Planning System (MaPPS)



MaPPS: New environmental / safety screening system (under development)

SHRP2 Expediting Project Delivery (C19)

- Expedite project delivery through:
 - Enhanced early environmental coordination
 - More streamlined permitting
 - Facilitated by Geospatial Data Collaboration w/in planning process
 - Every Day Counts 2



Eco-Logical & the MassDOT Project Planning System (MaPPS)



MaPPS

- Planning: Online Project Initiation
- Analysis: Automated environmental, safety and vulnerability screening
- Reporting: Design and analysis recommendations for scopes of work & construction estimates
- Coordination: Planning phase agency review/comment capability



Incorporation of Eco-Logical Steps into Business Processes

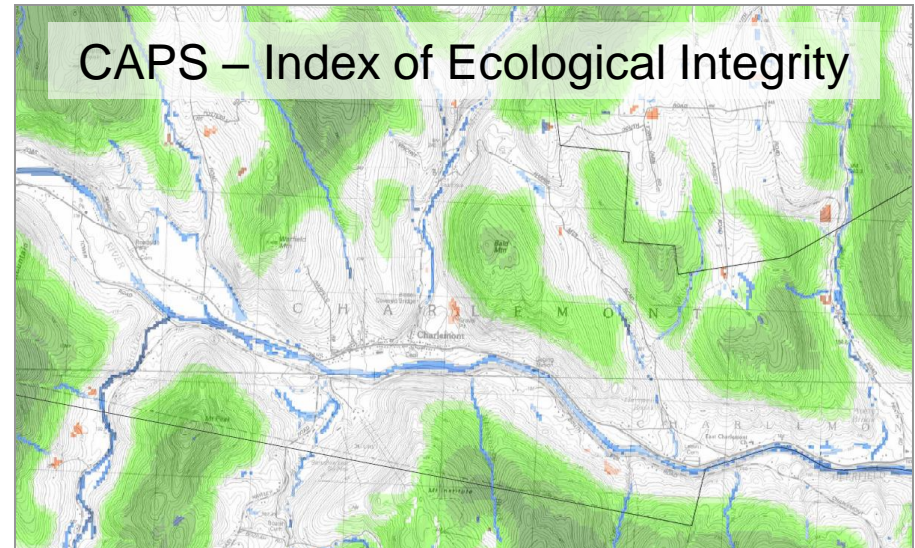
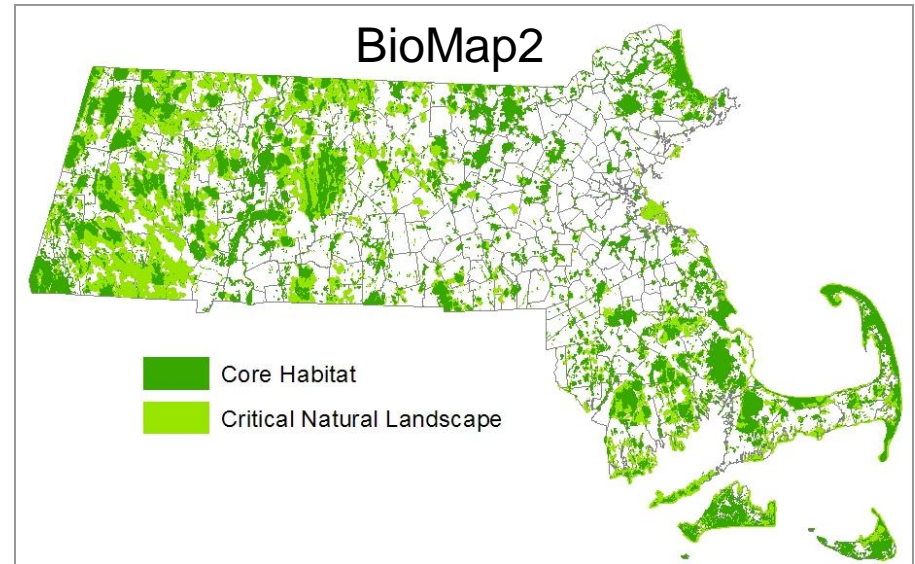


Eco-Logical & MaPPS

- Build & strengthen collaborative partnerships, vision (Step 1)
- Integrate conservation, natural resources, watershed, species recovery & wildlife action plans (Step2)
- Create REF: conservation strategy + transportation plan (Step 3)
- Establish & prioritize ecological actions (Step 5)
- Deliver conservation & transportation projects (Step 8)
- Update REF (Step 9)

Regional Ecosystem / Environmental Analysis Framework

- State conservation plan
 - BioMap2
- Conservation priority modeling
 - Conservation Assessment & Prioritization System
- Ecological connectivity priority modeling
 - Critical Linkages
- Site specific conservation data
 - Diadromous fish restoration
 - Coldwater Fisheries
 - Wildlife mortality hotspots
 - Restoration opportunities



Questions / More Information:



Today 11:00am - 11:30am

The Development of a Planning-phase Environmental and Vulnerability Screening Tool and Interagency Geospatial Data Collaboration Application in Massachusetts

Tim Dexter

Wetlands and Water Resources

Environmental Services

(857) 368-8794

timothy.dexter@state.ma.us